

2025 STRIKE East Hartford LL 1746 Strike Lines

Regulations

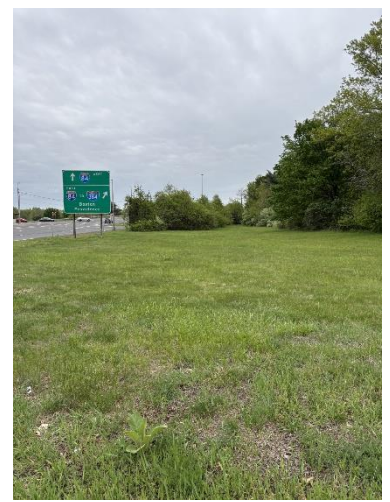
- Keep the line moving and active
- Show up as often as possible to show your support
- Respect your captains

Union Hall Home Base 860-568-3000

Extra Parking – across from Pho 501 & next to motel – come Tuesday we will be shuttling people as often as possible. Park on Street wherever you can and the hall. Reaching out to other resources for more parking. Below is a panoramic photo there is a brick building on the left that is Pho 501 directly across the street is additional parking



Silver Lane & Roberts St – 15 people minimum – Try to park on road



Walk the line and in between line and crosswalk don't cross yellow line going into company property. Center photo is the view from the other side of the road it's a large line we need a lot of people here. Even if its not

your day try to show up as often as possible. We can set up our pop ups on either side of the crosswalk. The photo on the right in a grassy area we are hoping to use for additional parking plus the road. That is the area to the immediate right of leaving the company property and going 84 east bound.

Brewer Street & Glenn Rd– 10 people minimum – Try to park on road



The picture on the left shows the yellow line you need to walk don't cross going towards Contractors Rd. The middle photo shows a median with grass which is a great spot for a pop up. The line extends to in front of the van have a few on that side as well. The photo on the right is Glen Rd. park there or on Brewer.

Willow Street & Main - 10 people minimum – Try to park on road



The picture on the left is how the entrance looks coming off Rt. 2 try to park on that road and use the cross walk to approach the picket line . The second picture with the defined yellow picket line in it is the line you need to walk use the crosswalk here as the day gets busier or if police ask you too. This line the company put way too close to the road. The photo with the truck, park there and behind.



Power House – 5 people minimum – Walk from the hall



This line is across from rebel dog coffee. Park at the hall and walk on the credit union side of the street and cross Main street for this picket line. At his like there is not much space try to stay as tight to the line as possible.



Colt Street to the right of Rt2 off – 3 people minimum

When you get off the highway this post is to your immediate right before Goodwin College there is a street on the right park wherever you can over there. The line is close to the gate to the facility itself.

